

## INDUSTRIAL SWEEPING SYSTEMS

# INDUSTRIAL SWEEPING SYSTEMS



- Optimum Suction Power
- Vacuum Safety
- Environment Safety
- Hygienic Cleaning
- Saving of Time
- High Efficiency



## MODE OF OPERATION

ICV, ICVX and MCV Series Central Vacuum Sweepers have been developed for central cleaning of industrial facilities. The polluting points at the facilities are cleaned using installed sucker pipes and by way of mounting flexible hoses to regularly placed sucking branches with camlock coupling pieces. The branches are connected with camlocks having proportional diameter and automatic covers. The number of suction hoses, which will provide sucking at the same time, may change from 1 to 3.

## ADVANTAGES

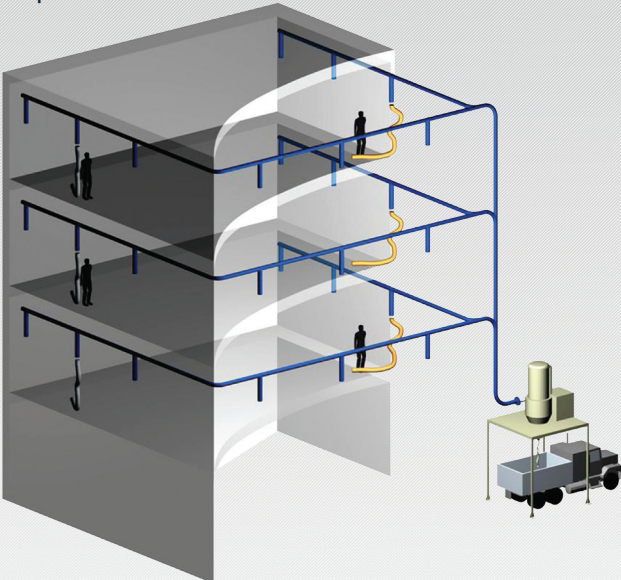
- They do not go around since vacuuming process is done particularly without mechanical dissemination of volatile and hazardous materials mechanically.
- Points, which are hard to access, are easily accessible through special branches.
- Saves time thanks to its high performance.
- It provides a hygienic environment for prevention of environment pollution and protection of human health.

## AREAS OF USE

Iron, Steel, Cement, Detergent, Pharmaceutical, Food, Glass Industry, Plaster, Lime, Ceramic, Marble, Chemistry, Paint, Coal-Based Power Plants, all types of industry facilities.

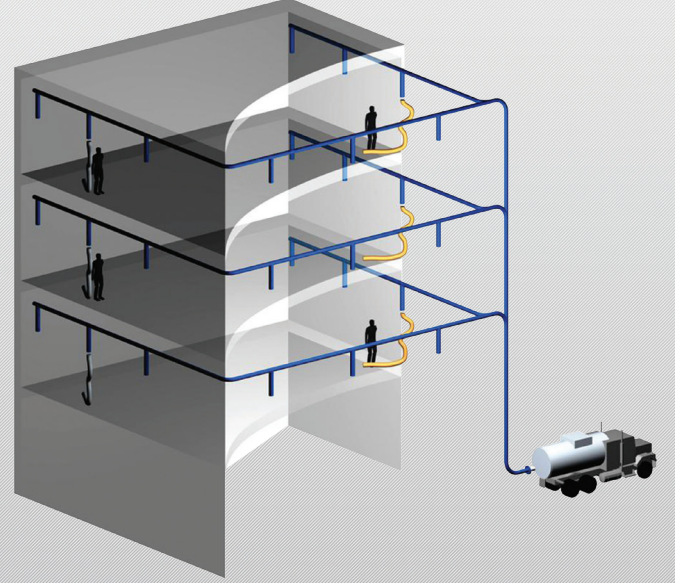
## (ICVX) CENTRAL VACUUM CLEANING SYSTEM

These units are mounted onto a convenient point of the facility. Piled materials are vacuumed, are accumulated at "ICVX" unit and are transmitted to Truck, Bigbag or another transfer point from this point on a periodical basis.



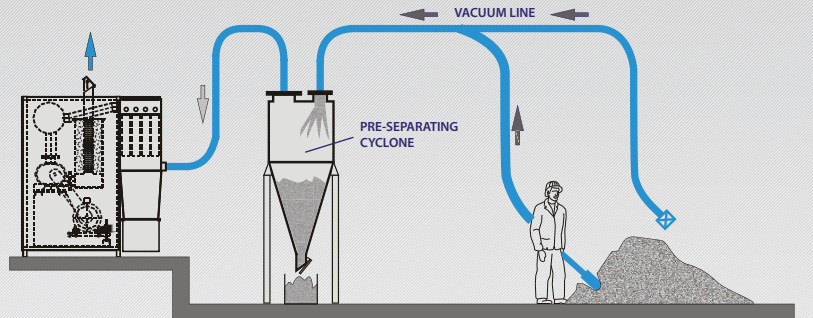
## (MCV) MOBILE VACUUM CLEANING SYSTEM

These units and the central sucking line gathering out of the building are connected. Since MVC-3000 device is a mobile unit, they may be used in between the blocks without depending on a single point.



## (ICV) CENTRAL VACUUM CLEANING SYSTEM

These units are used in vacuum cleaning of materials piled to a high extent. The coarse particles are separated from the unit at first using a pre-separating cyclone, the fine particles accumulate in the bucket of the vacuum unit and are discharged periodically.





# INDUSTRIAL SWEEPING SYSTEMS

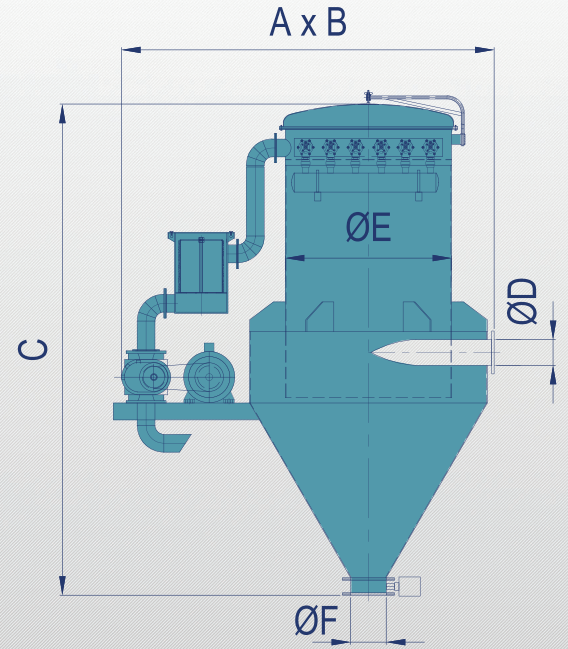
## (ICVX) CENTRAL VACUUM SYSTEMS

These vacuum sweepers are manufactured for central cleaning of indoor and outdoor spaces of industrial facilities with capacity ranges of 1500m<sup>3</sup>/h-3.000m<sup>3</sup>/h, with high vacuum (500mbar) power and with a maximum rate of 250mt; plus vacuuming and pneumatic transfer of cast and piled materials are targeted. They are mounted onto interior hopper or direct hopper units. It has an automatic jet cleaning interior filter. It may operate synchronously with 1 or 3 sucking components. The piled material may be discharged into another storage hopper, truck or bigbag by pneumatic means.

## AREAS OF USE

Steel, Cement, Glass, Lime, Plaster, Paint, Ceramic and Tree Plants etc.

Model	FILTER SURFACE (m <sup>2</sup> )	A	B	C	D	øE	øF	Power (Kw)	Weight (kg)
ICVX-1500	20	3.000	2.200	4.000	5"	1.400	300	37	1.500
ICVX-2000	25	3.500	2.600	4.500	6"	1.600	300	55	1.900
ICVX-3000	36	4.000	3.100	5.000	8"	2.000	400	90	2.600



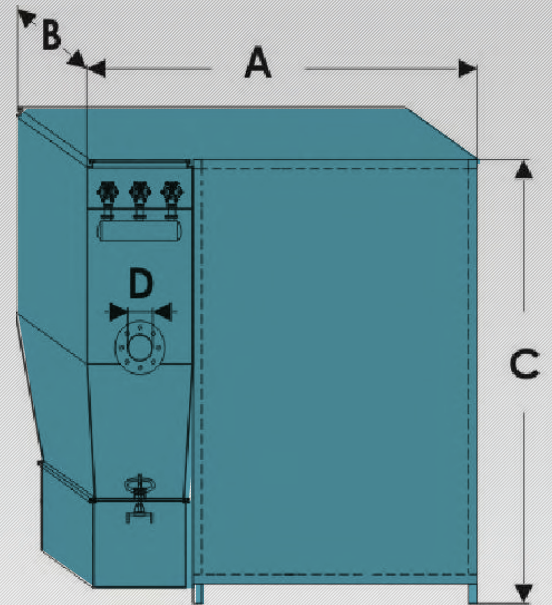
## (ICV) STABLE CENTRAL VACUUM SYSTEMS

They have a compact structure and are manufactured with capacity ranges of 1500 m<sup>3</sup>/h-3.000 m<sup>3</sup>/h. It includes an automatic jet cleaning interior front filter in vacuum pump, blower sucking filters and a special material collecting bucket. IVC Series is usually used for direct vacuuming of cast and piled materials; in addition, they may be used after pre-separating cyclone operation. They are manufactured for pneumatic transfer to the target point.

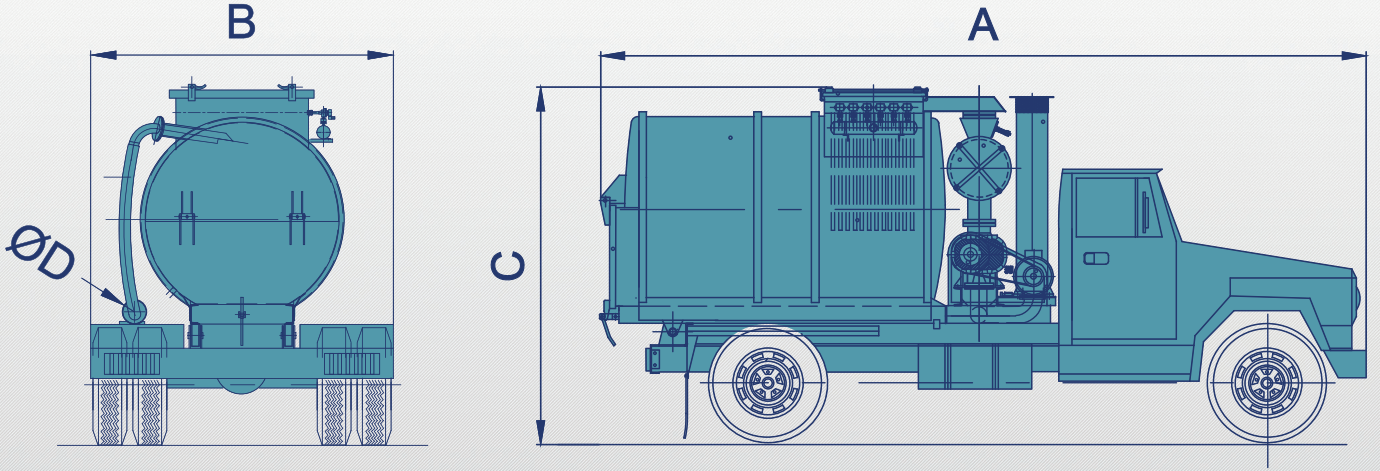
## AREAS OF USE

Used for cleaning of facilities with pneumatic Transport Systems, Ship Blasting Rooms, Blastroom Grit Collecting, Food, Chemistry, Ceramic, Lime and Plaster etc.

Model	FILTER SURFACE (m <sup>2</sup> )	A	B	C	D	Power (Kw)	Weight (kg)
ICV-1500	20	2.100	1.500	2.000	5"	37	1.000
ICV-2000	25	2.300	1.600	2.200	6"	55	1.200
ICV-3000	36	2.500	1.800	2.200	8"	90	1.500







## (MCV) MOBILE CENTRAL VACUUM SYSTEMS

They are manufactured with all components including automatic jet cleaning interior front filter, vacuum suction filter as mounted onto a truck or trailer. They have a capacity of 3.000m<sup>3</sup>/h in addition to 500mbar vacuum power. They are used with DC electric motor for power transmission system or optionally on diesel fuel motors. The piled up materials collect on a truck or trailer, they may be discharged into the established area according to damping rule or they may be transported to another store by use of pneumatic transport system.

## AREAS OF USE

Steel, Glass, Cement, Lime, Plaster, Ceramic etc. factories. They may be connected to the sucking point in MVC Type Sweepers by way of installing a line to the exterior of the building with proportional-diameter structures coming from the cleaning points in industry facilities.

Model	FILTER SURFACE (m <sup>2</sup> )	A	B	C	D	Power (Kw)	Weight (kg)
MCV-3000	36	6.750	2.500	3.200	3" - 4"	90	--

The sizes given are for informative purposes and may not be used in manufacturing. For detailed information, contact with MDSJ.